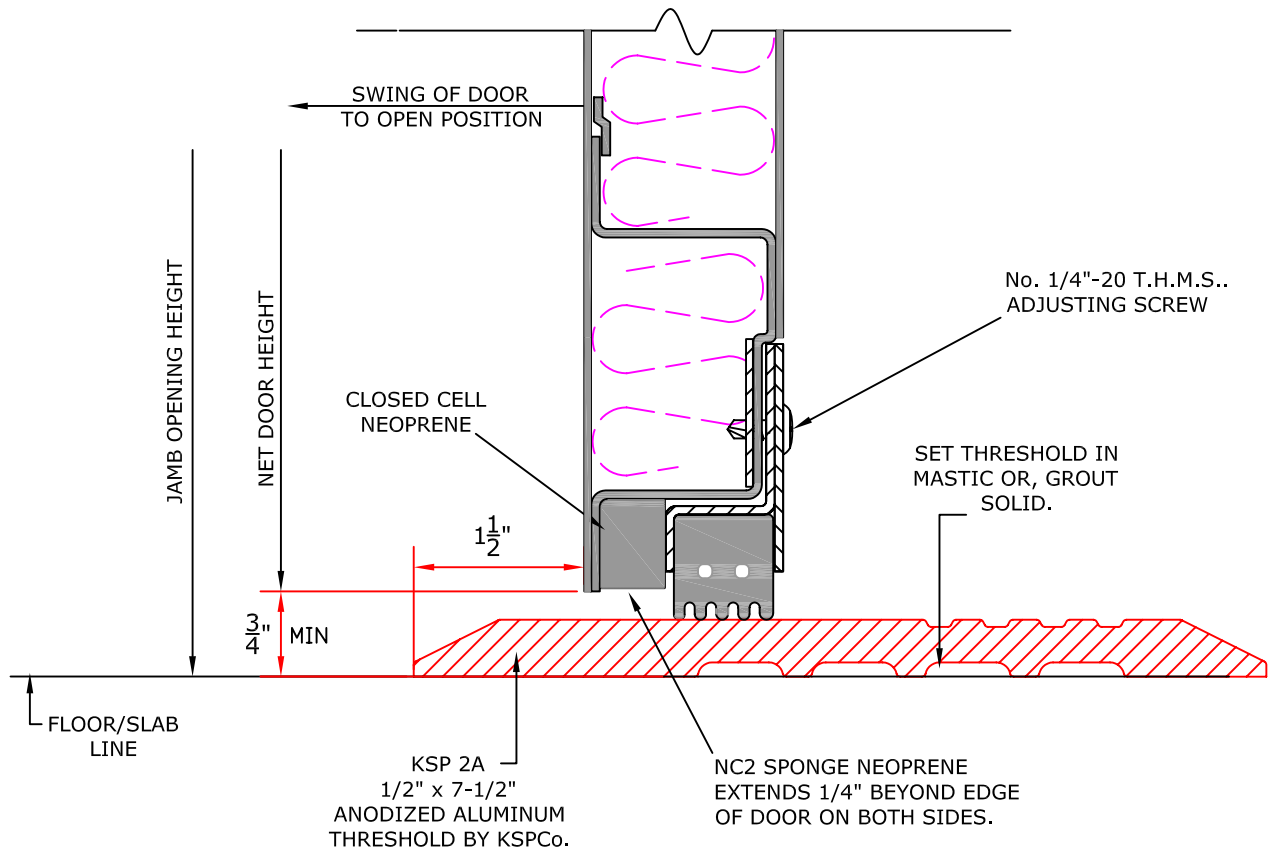


# STC 51



Pico Rivera, CA 90660  
(562) 695 - 0645



**CAM-LIFT DOOR BOTTOM ASSEMBLIES**

**STC 51**



Pico Rivera, CA 90660  
(562) 695 - 0645

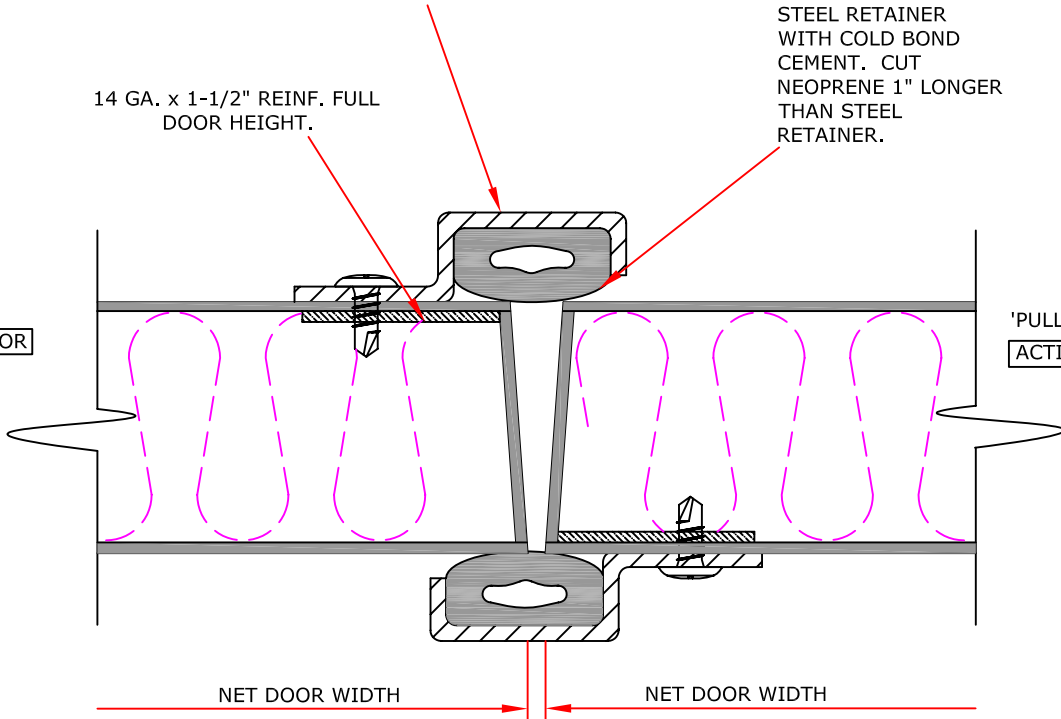
12 GAUGE ASTRAGAL MOUNTED ON 'PUSH SIDE' OF THE INACTIVE DOOR. ATTACH WITH NO. 12 T.H.S.M.S. AT 12" O.C. AND 3-1/2" FROM ENDS. LENGTH = NET DOOR HEIGHT MINUS FRAME STOP HEIGHT.

NO. 341 EXTRUDED NEOPRENE SPONGE INSERT. APPLY TO STEEL RETAINER WITH COLD BOND CEMENT. CUT NEOPRENE 1" LONGER THAN STEEL RETAINER.

14 GA. x 1-1/2" REINF. FULL DOOR HEIGHT.

'PUSH SIDE'  
INACTIVE DOOR

'PULL SIDE'  
ACTIVE DOOR



**KRIEGERSONIC SINGLE ACOUSTICAL DOOR ASTRAGAL**

**STC 51**



Pico Rivera, CA 90660  
(562) 695 - 0645