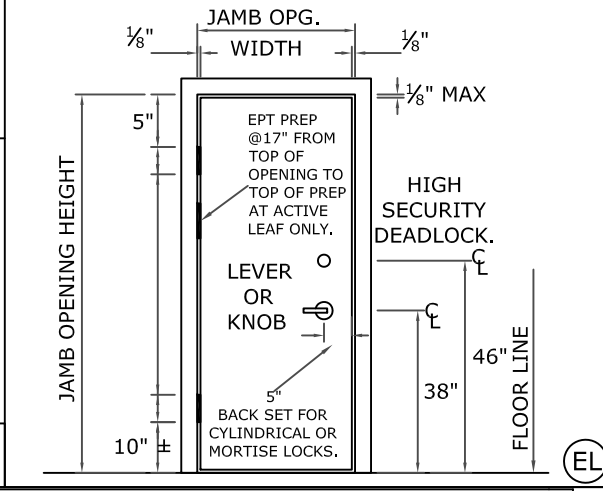
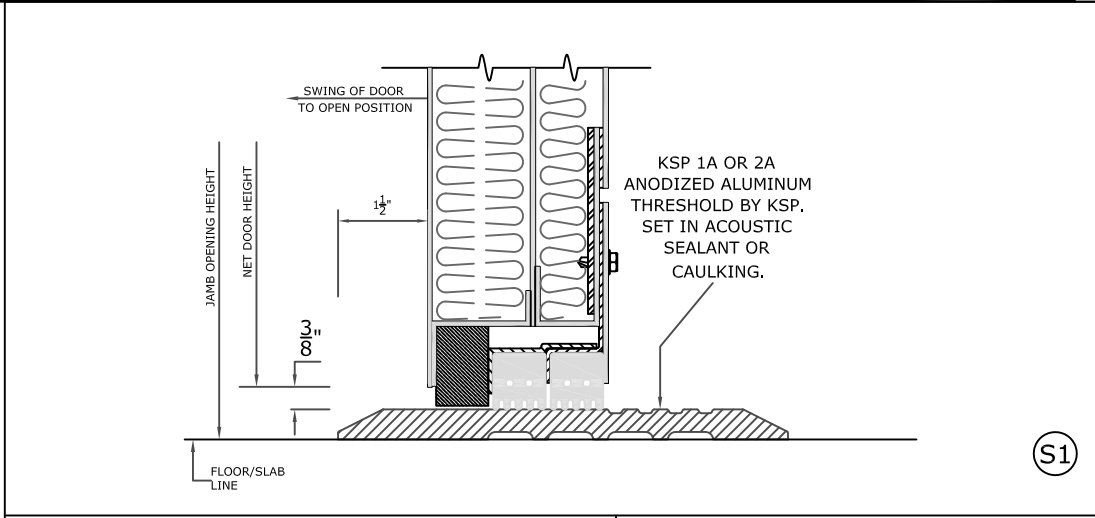
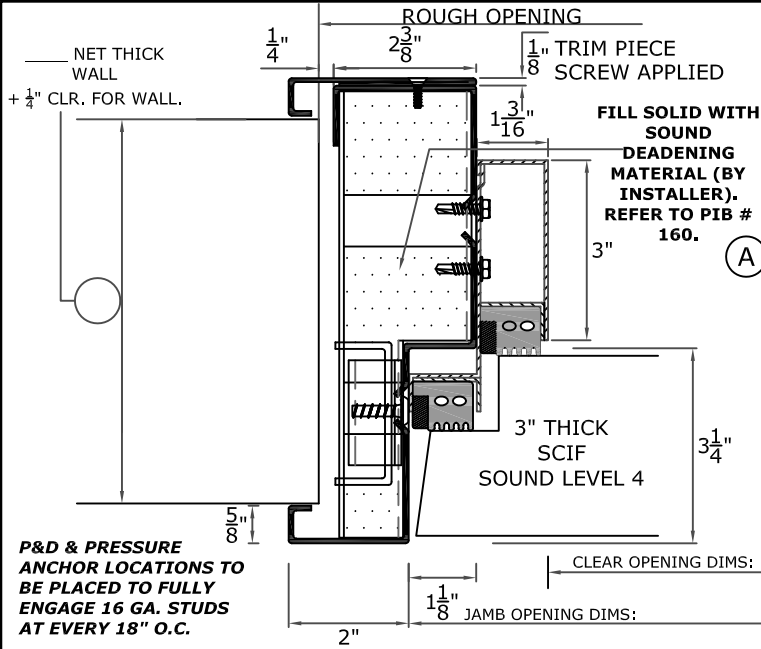


**SCIF LEVEL 4  
SHORT ORDER**

**OPENING SIZE - \_\_\_' \_\_\_" x \_\_\_' \_\_\_" - ROUGH OPENING = \_\_\_' \_\_\_" x \_\_\_' \_\_\_"**  
 (Rough Opening Dimension = Door Opening Width + 3"; door Opening Height + 1-1/2")



**FOR APPROVAL**  
 1. SUPPLY WALL CONSTRUCTION & DIMENSIONS.  
 2. ADVISE FLOORING/SILL CONDITION.  
 3. SUPPLY DOOR OPENING OR ROUGH OPENING DIMENSIONS.  
 4. CIRCLE HANDING  
 5. SUPPLY MARK NUMBER  
 6. SUPPLY HARDWARE SETS/DEFINITIONS  
 7. SIGN FOR APPROVALS

AS BUILT DRAWINGS WILL BE SENT FOR INSTALLERS USE; PRODUCT BULLETINS/INSTALLATION DOCUMENTS AVAILABLE AT [WWW.KRIEGERPRODUCTS.COM/INSTALLATION](http://WWW.KRIEGERPRODUCTS.COM/INSTALLATION).

**DOOR (MARK #):** \_\_\_\_\_

**HARDWARE:** \_\_\_\_\_

**DOOR HARDWARE:** \_\_\_\_\_

5" X 5" X .250" CAM LIFT HINGES (BY KSP)      CLOSER: \_\_\_\_\_

LOCKSET: \_\_\_\_\_      HIGH SECURITY DEADLOCK & STRIKE #: \_\_\_\_\_

KSP 1A or 2A THRESHOLD

**APPROVED: X** \_\_\_\_\_



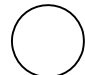
SCIF Sound Level 4 (STC 55/FSTC 50)

**SCIF Sound Level 4 (Single)**

Project No: \_\_\_\_\_

Date: \_\_\_\_\_

Drawn By: \_\_\_\_\_

Detail: 

Sheet: \_\_\_\_\_

